



KNOWS HOW  
2016 COMPANY PRESENTATION





FROM THE DESIGN AND MANUFACTURE OF THE MOULD, TO THE ACTUAL MOULDING OF THE PRODUCTS AND THEIR ASSEMBLY. DUEPI HAS YEARS OF EXPERIENCE IN THE FIELD OF RUBBER AND TECHNOPOLYMERS, THANKS TO THE COMPETENCE OF ITS TEAM, AND THE MOST ADVANCED TECHNOLOGIES AND TOOLS

TOTAL AREA	4.366 mq
PRODUCTION GROUND	2.208 mq
OPEN DOCKS	242 mq
OPEN GROUND	1.916 mq
<b>MACHINES:</b> PRESSES	25
WORKSHOP	24
EMPLOYEES	35
2015 TURNOVER	4,2 mln€

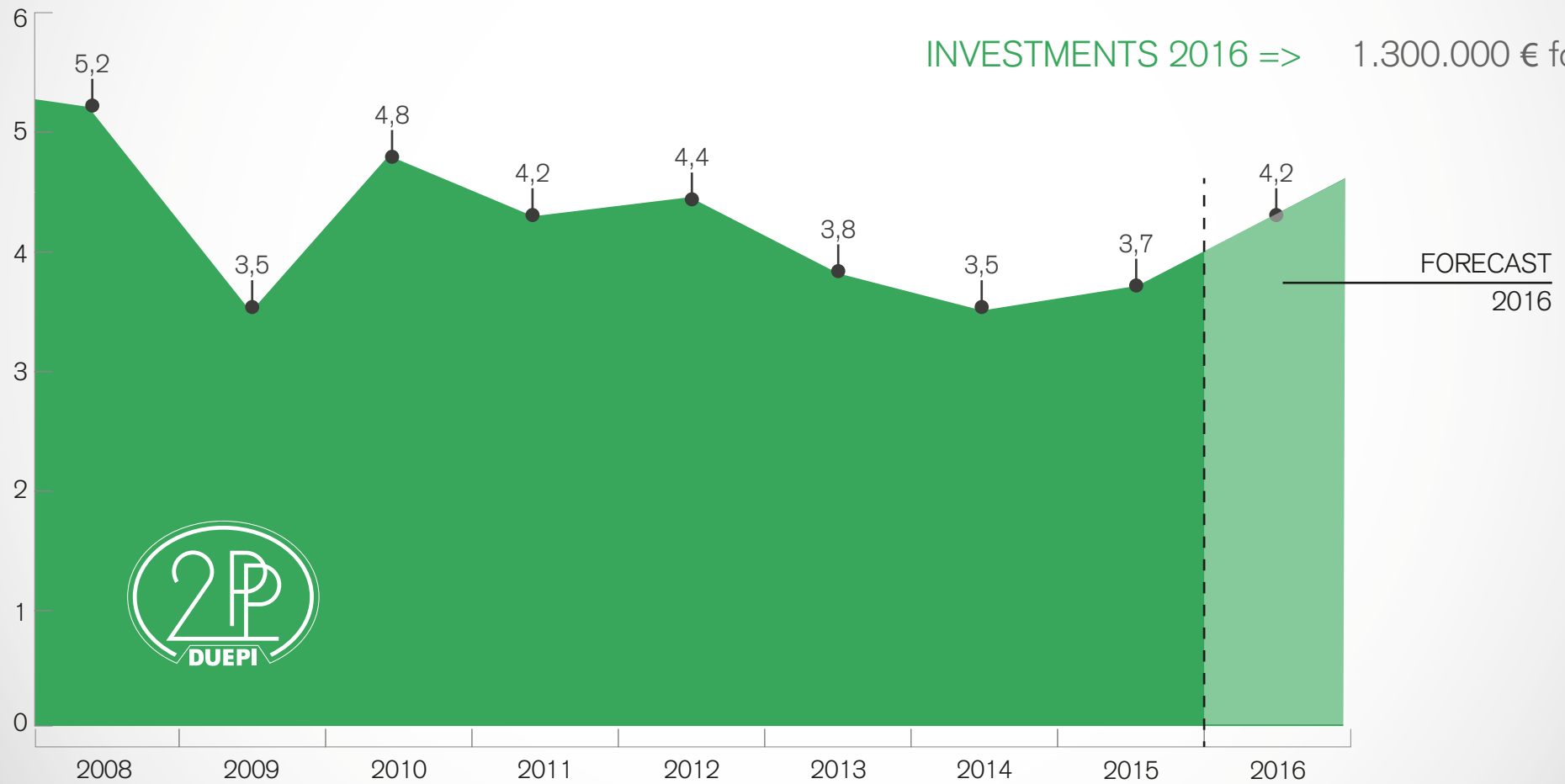
INVESTMENTS 2012 => 120.000 €

INVESTMENTS 2013 => 150.000 €

INVESTMENTS 2014 => 350.000 €

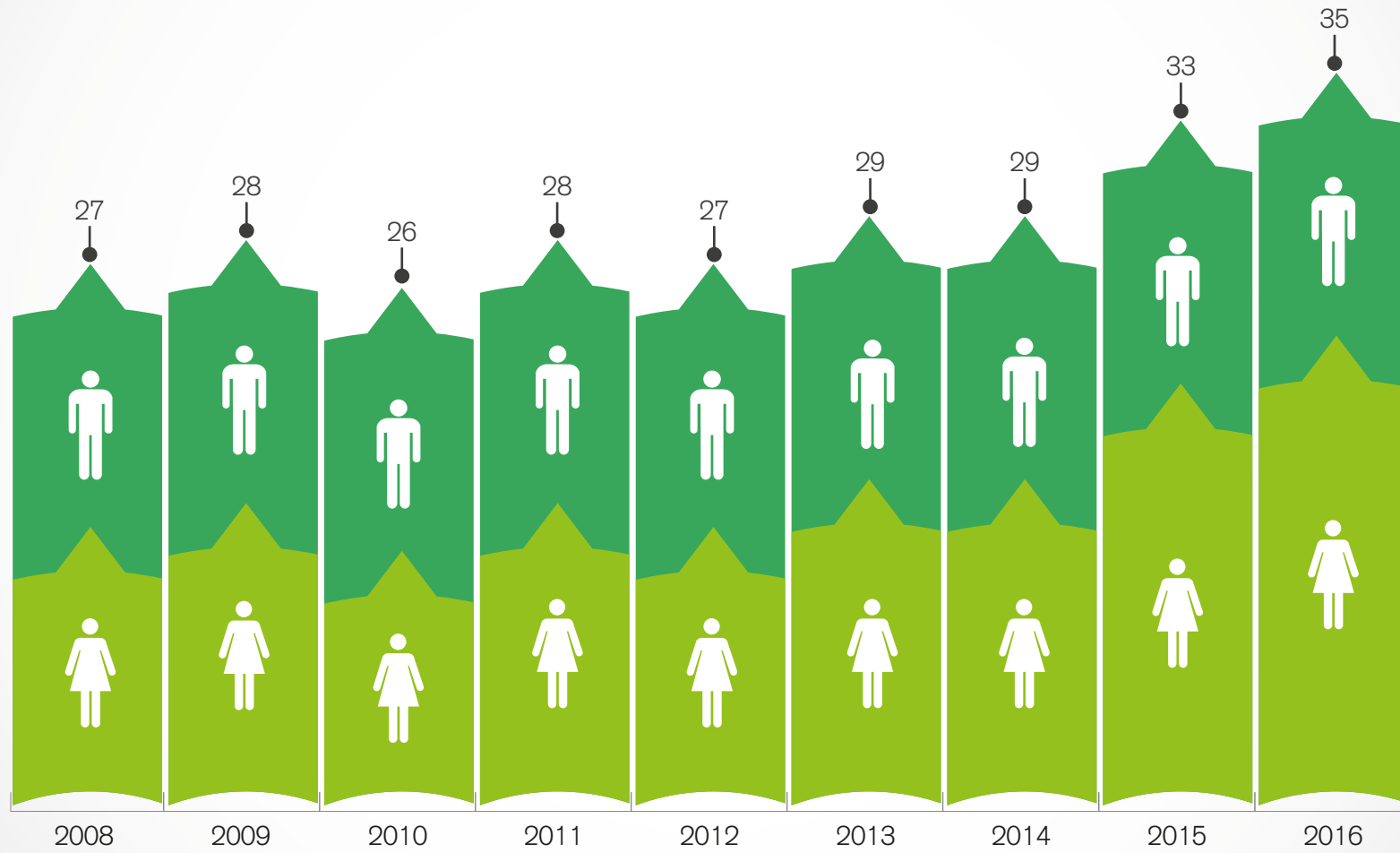
INVESTMENTS 2015 => 550.000 €

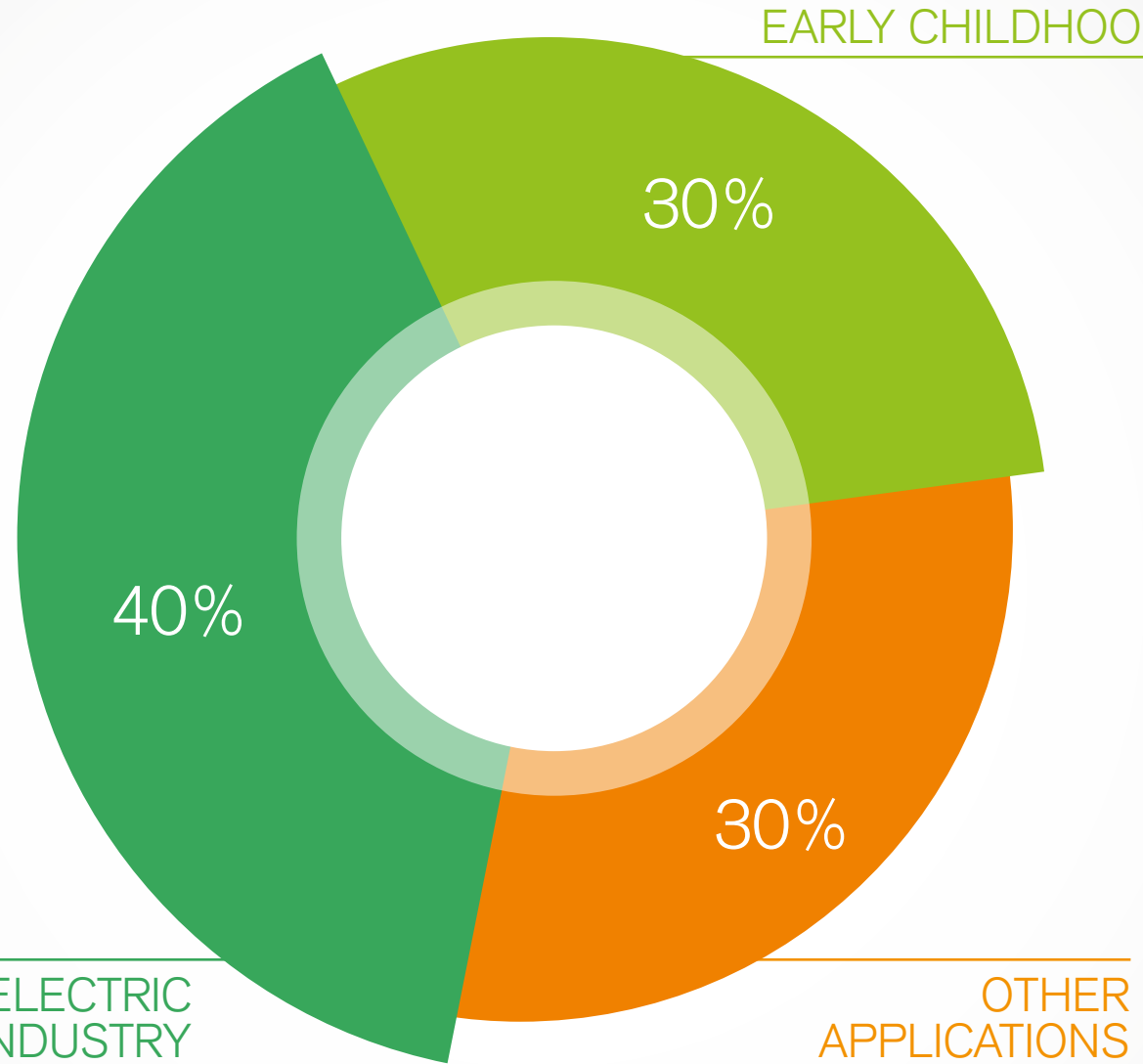
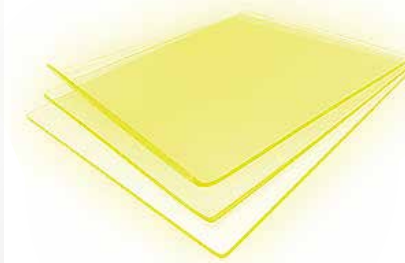
INVESTMENTS 2016 => 1.300.000 € forecast



in Million €







EARLY CHILDHOOD

ELECTRIC INDUSTRY

OTHER APPLICATIONS

DATA FROM 2015 TURNOVER

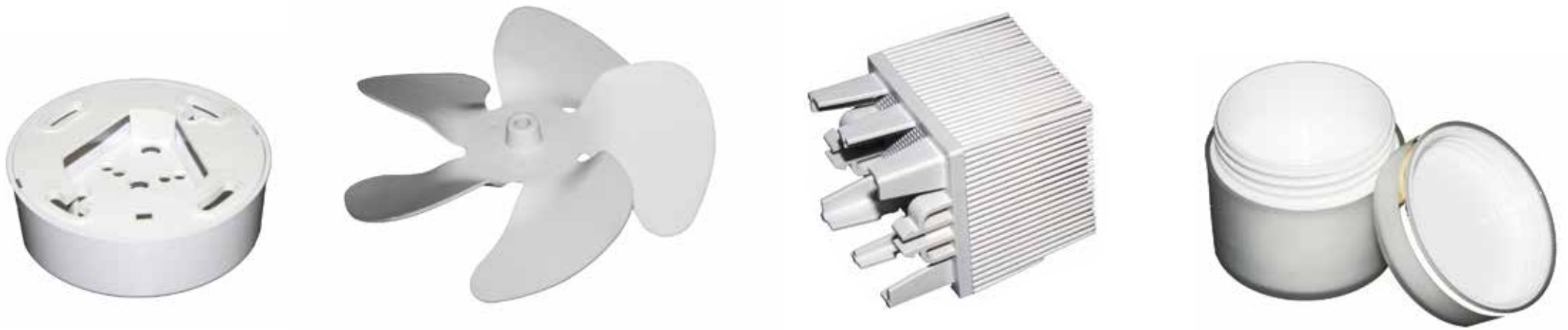


100%  
DISTRIBUTORS

DATA FROM 2015 TURNOVER



- PHARMACEUTICAL – EARLY CHILDHOOD •
- ELECTRIC – ELECTROMECHANICAL •
- HYDRAULIC •
- AUTOMOTIVE – NAUTICAL •
- TOYS – HOME DESIGN •
- COSMETICS – PACKAGING •
- GARDENING – FURNITURES •
- LIQUID SILICON •
- LIGHTING TECHNOPOLYMERS •



THE MOULDS PRODUCTION AREA IS EQUIPPED WITH A WIDE RANGE OF  
TOOLS, BURRS, **LATHES AND BOTH WIRED AND SINKING EDMS**

ALL THE MACHINERY IS **CNC AND CAM PROGRAMMED**

A **MOLD FLOW STATION**, EQUIPPED WITH DEDICATED SOFTWARE,  
SIMULATES MULTI-CAVITY INJECTION. THIS ALLOW US TO  
TEST THE BEHAVIOUR OF THE MATERIALS PRIOR TO START  
THE INDUSTRIAL MOULDING PROCESS

THE INJECTION MOULDING DEPARTMENT IS EQUIPPED  
WITH VARIOUS **PRESSES AND DIFFERENT PRESSING TONNAGE.**  
FROM 35 TO 350 TONS. THE MACHINES ARE BUILT-IN WITH AUTOMATIC  
**ROBOTS FOR THE PICK-UP AND PLACE OF THE READY MADE PARTS**





Large sizes and Endless O-Ring produced with an innovative step-molding method

[www.oringone.com](http://www.oringone.com)



O-Rings in various compounds with many certificates of quality. From the automotive to the hydraulic and the food industry

[www.duciguarnizioni.com](http://www.duciguarnizioni.com)



Molds design and manufacturing. Injection molding of custom made articles in many Technopolymers and Liquid Silicon

[www.duepistampi.com](http://www.duepistampi.com)



PTFE and HPP - High Performance Polymers. Stock shapes and customized engineered components

[www.fluorten.com](http://www.fluorten.com)



Rotary Shaft Oil Seals and custom made articles in various elastomers, and rubber-to-metal

[www.fpparis.com](http://www.fpparis.com)



Special and Large Size Rotary Shaft Oil Seals for the heavy duty industry

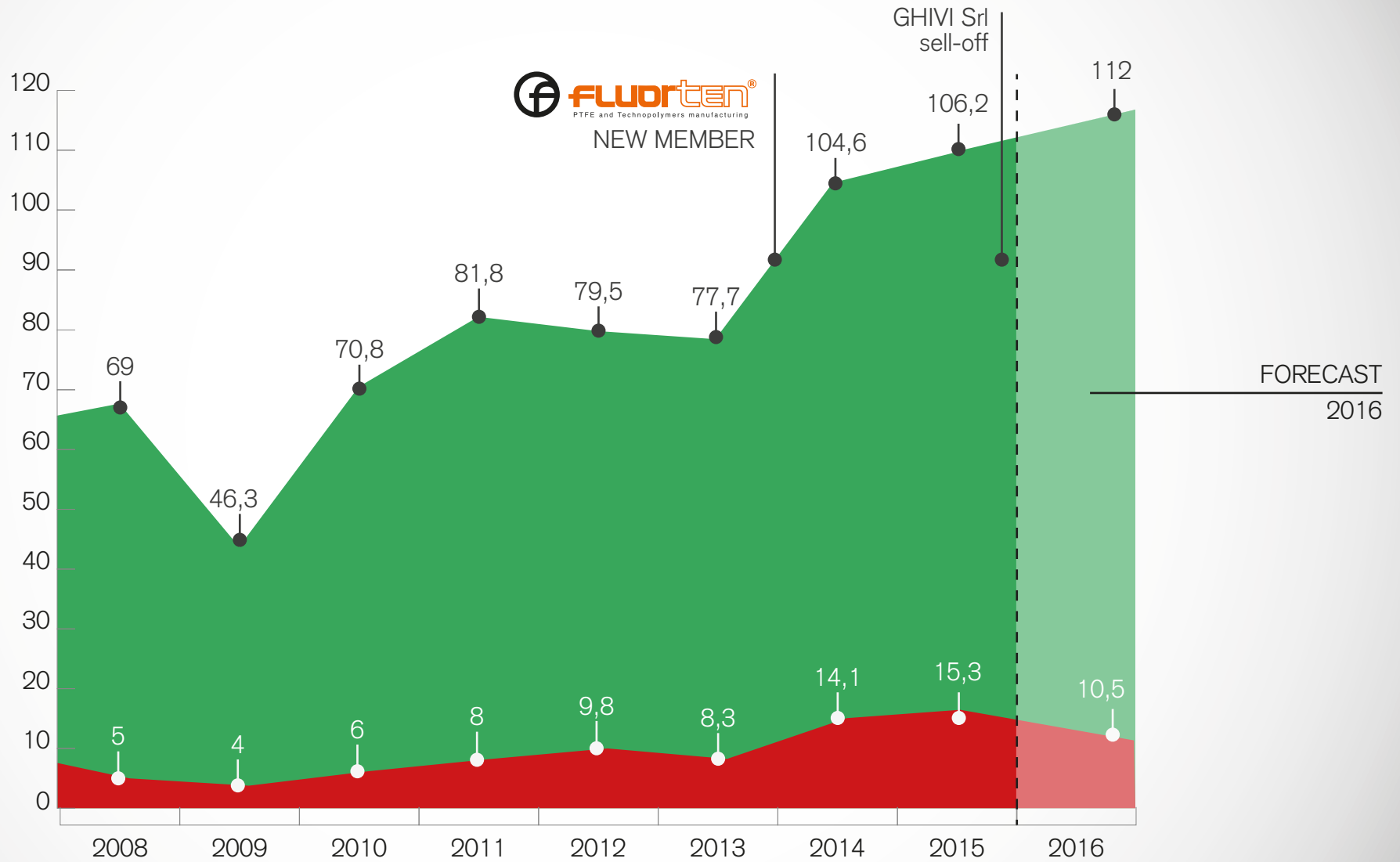
[www.atsoilseals.com](http://www.atsoilseals.com)



Bearings and Bushings for valves and other applications for the hydraulic, energy and metal industry

[www.slibitaly.com](http://www.slibitaly.com)

# TURNOVER e INVESTMENTS



in Million €





These data refer to the whole SEALCORE Network :

ORINGONE S.r.l. - DUCI S.r.l. - A.F.V.C. S.r.l. - DUEPI S.r.l. - IL PREZZEMOLO S.r.l. - FLUORTEN S.r.l.  
F.LLI PARIS S.r.l. - ATS S.r.l. - SLIB ITALY - FP MILANO S.r.l. - FP MODENA S.r.l. - GOA GOMMA S.r.l.



DUEPISTAMPI.COM

**DUEPI S.R.L**  
**HEADQUARTER**

VIA NATTA 9, 25036 - PALAZZOLO SULL'OGGIO (BS)

**LIQUID SILICON – ASSEMBLY – WAREHOUSE**

VIA RASO 6/B, 25036 - PALAZZOLO SULL'OGGIO (BS)

TEL. +39.030.74 01537 / FAX +39.030.7401538

info@duepistampi.com

[www.sealcore.net]

